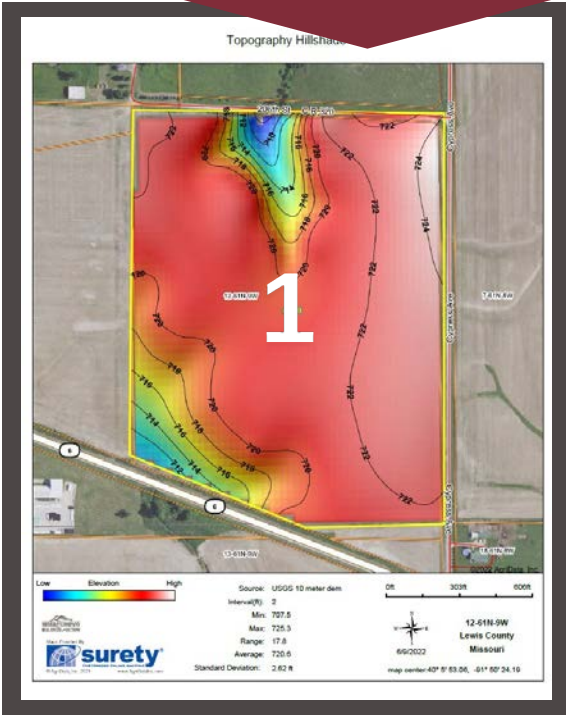
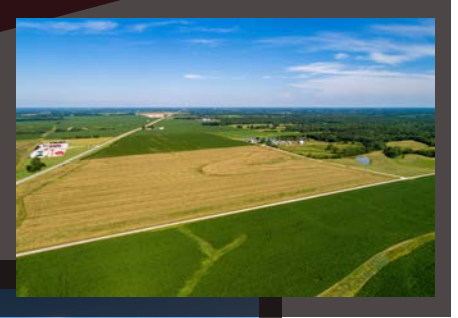


# Lewis County, MO ~ Tract 1

Hwy 6 & Cypress Ave frontage

SEC 12, TWP 61N, RNG 9W

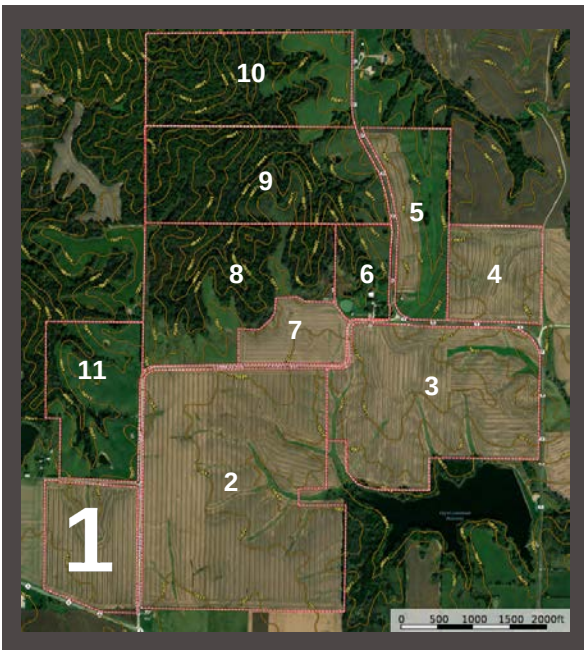
50.78 acres



[www.meyerlistings.com/auctions](http://www.meyerlistings.com/auctions)

SOIL CODE	SOIL DESCRIPTION	ACRES	%	CPI	NCCPI	CAP
50057	Putnam silt loam, 1 to 3 percent slopes	33.9	69.4	0	60	3w
50001	Armstrong loam, 5 to 9 percent slopes, eroded	6.66	13.63	0	67	4e
30106	Kilwinning silt loam, 1 to 5 percent slopes	6.34	12.98	0	60	3e
30068	Gorin silt loam, 5 to 9 percent slopes, eroded	1.95	3.99	0	77	3e
TOTALS		837.3 8(*)	100%	-	61.63	3.14

(\*) Total acres may differ in the second decimal compared to the sum of each acreage soil. This is due to a round error because we only show the acres of each soil with two decimal.



ONLINE BIDDING  
POWERED BY:  
**BIDWRANGLER**

- 50.78 acre tract nearly all tillable
- Highly tillable productive row crop land
- Hwy 6 & County road frontage
- Flat to gently rolling topography
- Putnam, Armstrong & Kilwinning soil types
- Public water & electric to site

The information gathered for this brochure is from sources deemed reliable, but cannot be guaranteed by Meyer & Company Auctions or its staff. All acres are considered more or less, unless otherwise stated. All property boundaries are approximate. Soil productivity ratings are based on the information currently available in the USDA/NRCS soil survey database. Those numbers are subject to change on an annual basis.

For additional details, maps, photos & bidding call or visit us at →

**MEYER & COMPANY**  
**AUCTIONS**

636.462.7777

[www.meyerlistings.com/auctions](http://www.meyerlistings.com/auctions)