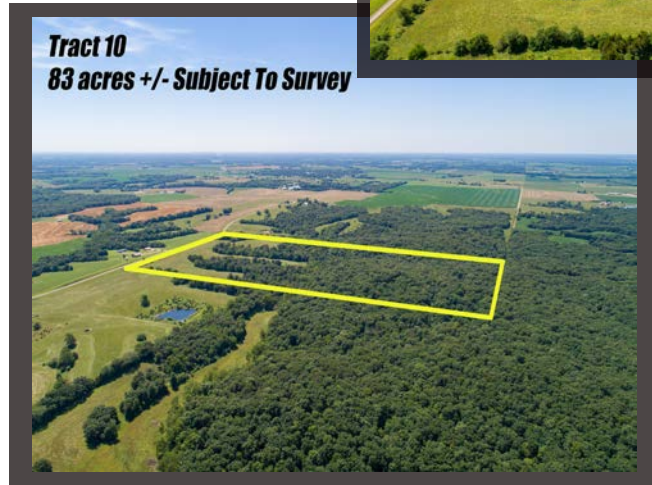
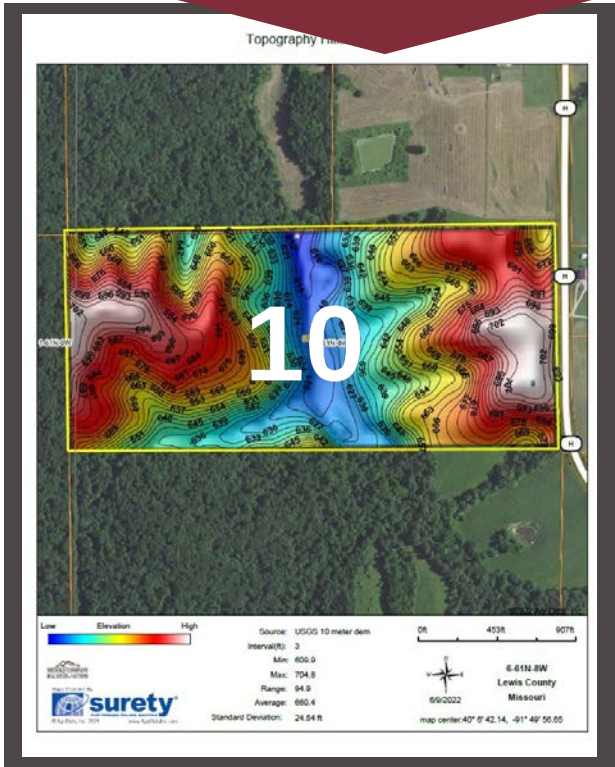


Lewis County, MO ~ Tract 10

West of Hwy H
SEC 6, TWP 61N, RNG 8W
84.07 acres



www.meyerlistings.com/auctions

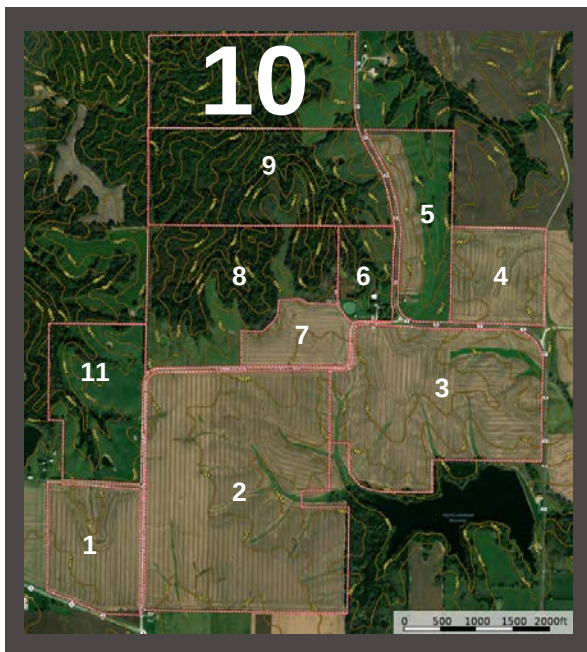
SOIL CODE	SOIL DESCRIPTION	ACRES	%	CPI	NOCPH	CAP
50042	Lindley loam, 20 to 35 percent slopes, eroded	59.73	71.78	0	47	0c
30060	Gorin silt loam, 5 to 9 percent slopes, eroded	23.48	28.22	0	77	3e
TOTAL S		83.21	100%	-	55.47	5.15

(*) Total acres may differ in the second decimal compared to the sum of each acreage soil. This is due to a round error because we only show the acres of each soil with two decimal



ONLINE BIDDING
POWERED BY:
BIDWRANGLER

- 84.07 acres mostly mature hardwood timber
- Blacktop highway frontage
- Rolling terrain
- Excellent hunting/recreational property
- Great site for home/cabin and lake
- Public water & electric to site



The information gathered for this brochure is from sources deemed reliable, but cannot be guaranteed by Meyer & Company Auctions or its staff. All acres are considered more or less, unless otherwise stated. All property boundaries are approximate. Soil productivity ratings are based on the information currently available in the USDA/NRCS soil survey database. Those numbers are subject to change on an annual basis.

For
additional details,
maps, photos & bidding
call or visit us at →

MEYER & COMPANY
AUCTIONS

636.462.7777

www.meyerlistings.com/auctions