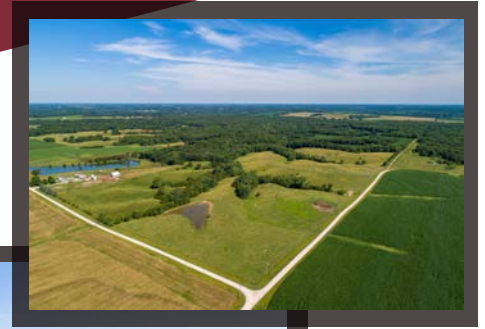
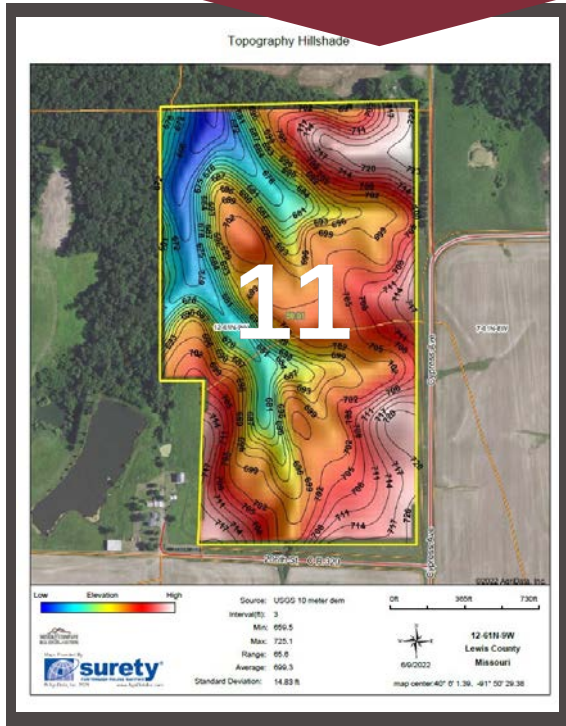


Lewis County, MO ~ Tract 11

West of Cypress Avenue
SEC 12, TWP 61N, RNG 9W
63.37 acres



www.meyerlistings.com/auctions

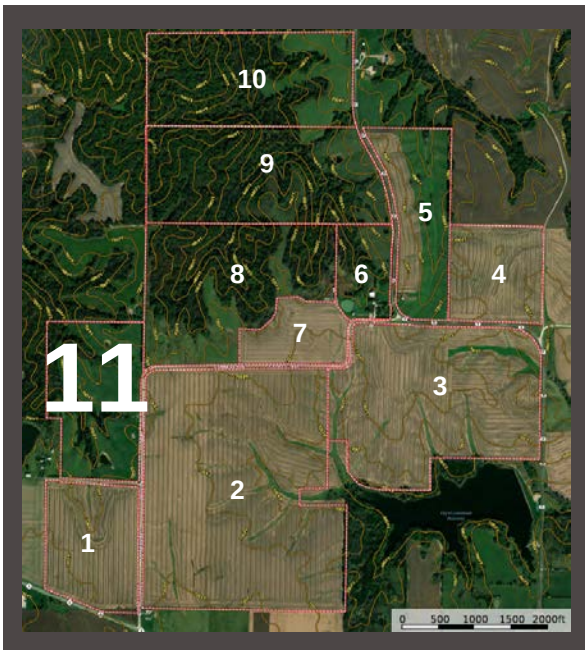
SOIL CODE	SOIL DESCRIPTION	ACRES	%	CPI	NCCPI	CAP
50042	Lindley loam, 20 to 35 percent slopes, eroded	37.45	61.52	0	47	6e
30068	Gorin silt loam, 5 to 9 percent slopes, eroded	19.61	32.72	0	77	3e
50001	Armstrong loam, 5 to 9 percent slopes, eroded	3.81	6.26	0	67	4e
TOTALS		60.87	100%		57.92	4.91

(*) Total acres may differ in the second decimal compared to the sum of each acreage soil. This is due to a round error because we only show the acres of each soil with two decimal



ONLINE BIDDING
POWERED BY:
BIDWRANGLER

- 63.37 acres of mostly pasture land
- Fenced and ready for cattle & horses
- County road frontage
- Excellent hunting/recreational property
- Great site for home/cabin/mini-farm
- Public water & electric to site



The information gathered for this brochure is from sources deemed reliable, but cannot be guaranteed by Meyer & Company Auctions or its staff. All acres are considered more or less, unless otherwise stated. All property boundaries are approximate. Soil productivity ratings are based on the information currently available in the USDA/NRCS soil survey database. Those numbers are subject to change on an annual basis.

For
additional details,
maps, photos & bidding
call or visit us at →

MEYER & COMPANY
AUCTIONS

636.462.7777

www.meyerlistings.com/auctions