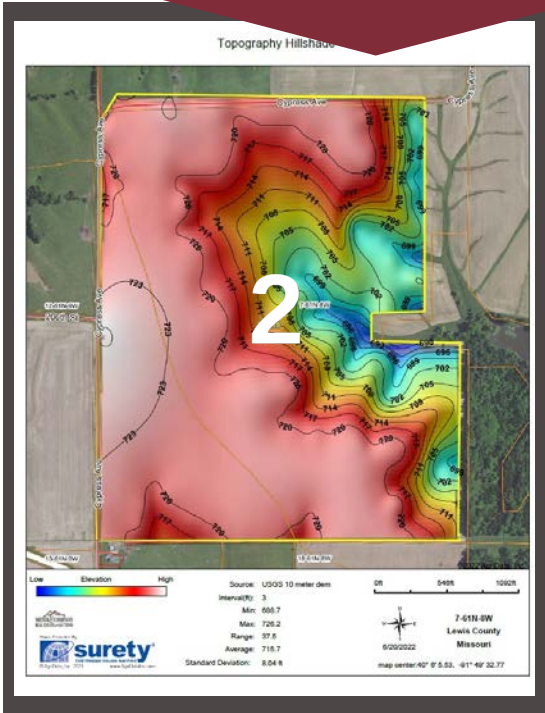


Lewis County, MO ~ Tract 2

Southeast side of Cypress Avenue

SEC 7, TWP 61N, RNG 8W

201.43 acres



www.meyerlistings.com/auctions

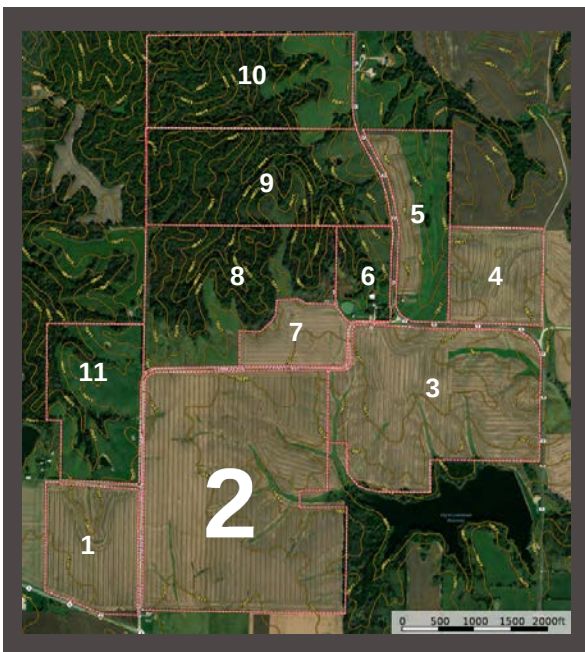
SOIL CODE	SOIL DESCRIPTION	ACRES	%	CPI	NCCPI	CAP
30106	Kilwinning silt loam, 1 to 5 percent slopes	61.22	30.02	0	60	3e
50057	Putnam silt loam, 1 to 3 percent slopes	49.72	24.38	0	60	3w
30068	Gorin silt loam, 5 to 9 percent slopes, eroded	48.61	23.84	0	77	3e
50001	Armstrong loam, 5 to 9 percent slopes, eroded	41.93	20.56	0	67	4e
60022	Leonard silt loam, 1 to 6 percent slopes, eroded	2.43	1.19	0	62	3e
30096	Keswick clay loam, Audrain-Shelby plain, 9 to 14 percent slopes, eroded	0.03	0.01	0	57	4e
TOTALS		837.3 8(*)	100%	-	65.51	3.21

(*) Total acres may differ in the second decimal compared to the sum of each acreage soil. This is due to a round error because we only show the acres of each soil with two decimal.



ONLINE BIDDING
POWERED BY:
BIDWRANGLER

- 201.43 acre tract with 197+/- acre tillable
- Highly tillable productive row crop land
- County road frontage on 2 sides
- Flat to gently rolling topography
- Kilwinning, Putnam & Gorin soil types
- Terraced with drain tiles



The information gathered for this brochure is from sources deemed reliable, but cannot be guaranteed by Meyer & Company Auctions or its staff. All acres are considered more or less, unless otherwise stated. All property boundaries are approximate. Soil productivity ratings are based on the information currently available in the USDA/NRCS soil survey database. Those numbers are subject to change on an annual basis.

For
additional details,
maps, photos & bidding
call or visit us at →

MEYER & COMPANY
AUCTIONS

636.462.7777

www.meyerlistings.com/auctions