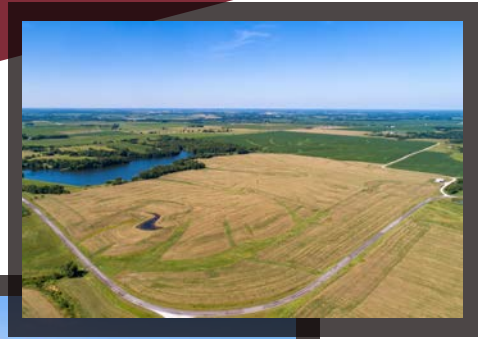
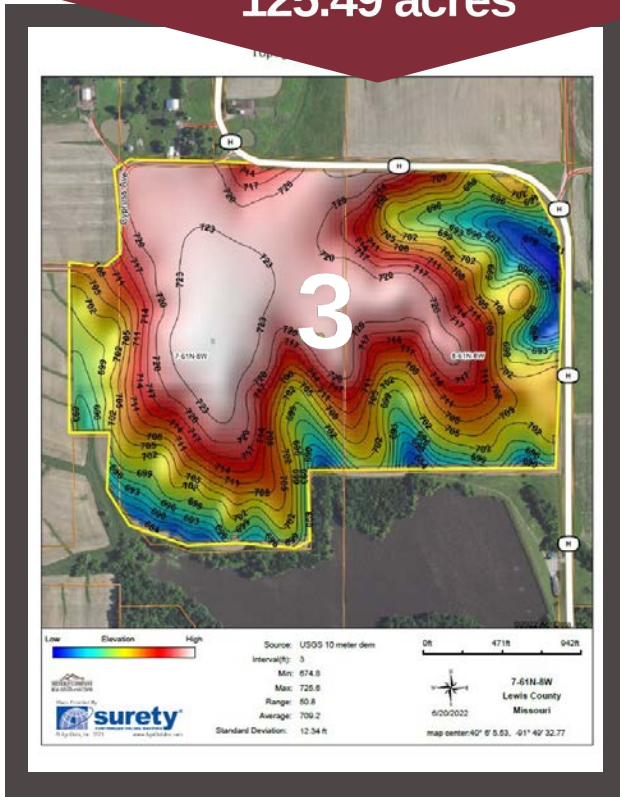


Lewis County, MO ~ Tract 3

Southwest of Hwy H
SEC 7, TWP 61N, RNG 8W
125.49 acres



www.meyerlistings.com/auctions



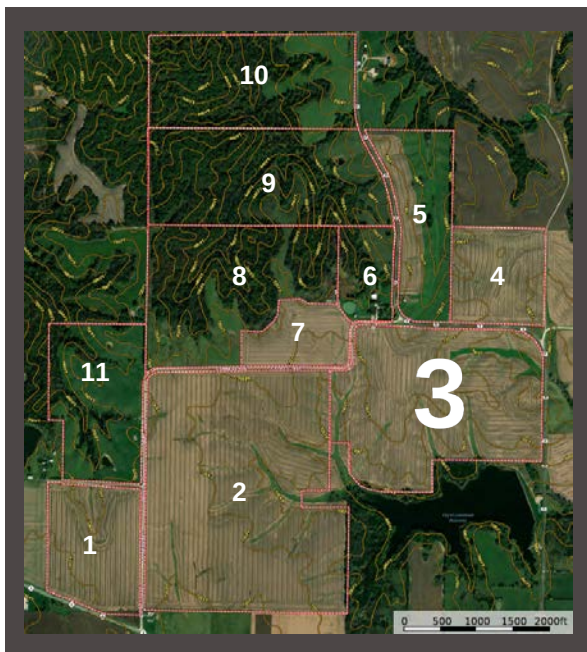
| SOIL CODE | SOIL DESCRIPTION | ACRES | % | CPI | NCCPI | CAP |
|-----------|---|-----------|-------|-----|-------|------|
| 50001 | Armstrong loam, 5 to 9 percent slopes, eroded | 51.82 | 43.5 | 0 | 67 | 4e |
| 30106 | Kilwinning silt loam, 1 to 5 percent slopes | 43.14 | 36.22 | 0 | 60 | 3e |
| 30096 | Keswick clay loam, Audrain-Shelby plain, 9 to 14 percent slopes, eroded | 24.16 | 20.28 | 0 | 57 | 4e |
| TOTALS | | 837.38(*) | 100% | - | 62.44 | 3.64 |

(*) Total acres may differ in the second decimal compared to the sum of each acreage soil. This is due to a round error because we only show the acres of each soil with two decimal.



ONLINE BIDDING
POWERED BY:
BIDWRANGLER

- 125.49 acre tract with 118+/- acre tillable
- Highly tillable productive row crop land
- Blacktop road frontage on 2 sides
- Gently rolling to rolling topography
- Armstrong & Kilwinning soil types
- Terraced with drain tiles
- Well maintained w/soil conservation practices



The information gathered for this brochure is from sources deemed reliable, but cannot be guaranteed by Meyer & Company Auctions or its staff. All acres are considered more or less, unless otherwise stated. All property boundaries are approximate. Soil productivity ratings are based on the information currently available in the USDA/NRCS soil survey database. Those numbers are subject to change on an annual basis.

For additional details, maps, photos & bidding call or visit us at

MEYER & COMPANY
AUCTIONS

636.462.7777

www.meyerlistings.com/auctions