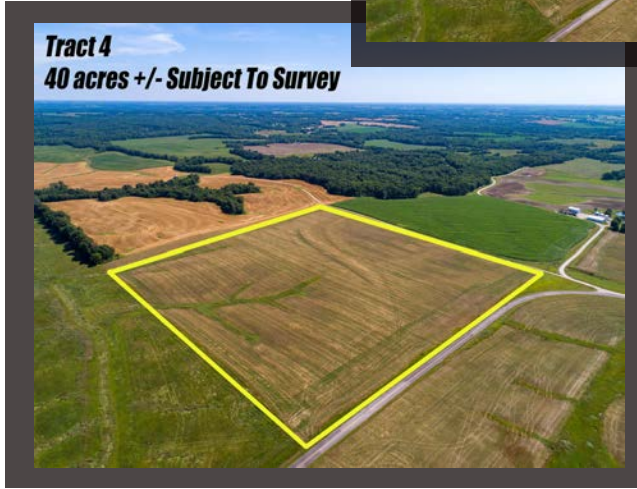
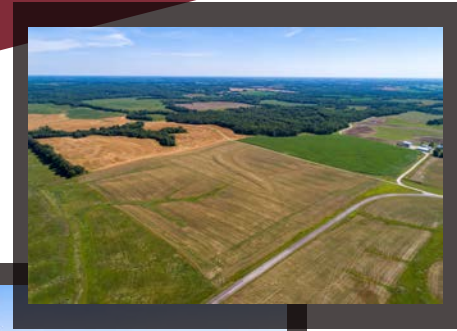
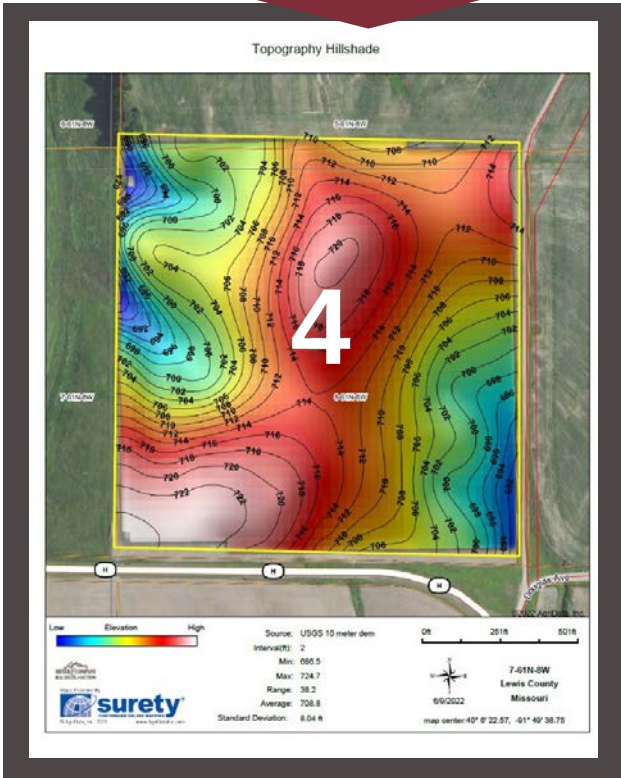


Lewis County, MO ~ Tract 4

North of Hwy H
 SEC 8, TWP 61N, RNG 8W
39.50 acres

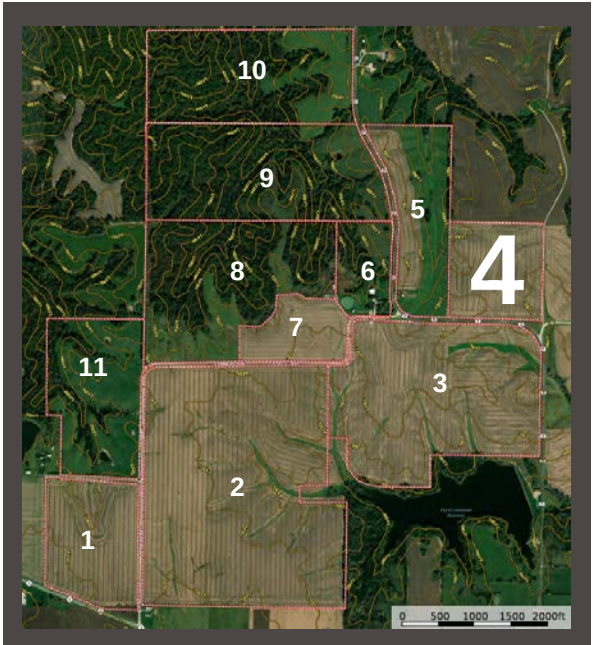


www.meyerlistings.com/auctions



| SOIL CODE | SOIL DESCRIPTION | ACRES | % | CPI | NCCPI | CAP |
|-----------|---|-----------|-------|-----|-------|------|
| 30108 | Kilwinning silt loam, 1 to 5 percent slopes | 17.77 | 45.38 | 0 | 60 | 3e |
| 50001 | Armstrong loam, 5 to 9 percent slopes, eroded | 11.62 | 29.67 | 0 | 67 | 4e |
| 30096 | Keswick clay loam, Audrain-Shelby plain, 9 to 14 percent slopes, eroded | 9.75 | 24.9 | 0 | 57 | 4e |
| TOTALS | | 837.38(*) | 100% | - | 61.3 | 3.55 |

(*) Total acres may differ in the second decimal compared to the sum of each acreage soil. This is due to a round error because we only show the acres of each soil with two decimal.



ONLINE BIDDING
 POWERED BY:
BIDWRANGLER

- 39.50 acre tract nearly all tillable
- Highly tillable productive row crop land
- Blacktop & County road frontage
- Gently rolling topography
- Kilwinning & Armstrong soil types
- Terraced with drain tiles
- Well maintained w/soil conservation practices

The information gathered for this brochure is from sources deemed reliable, but cannot be guaranteed by Meyer & Company Auctions or its staff. All acres are considered more or less, unless otherwise stated. All property boundaries are approximate. Soil productivity ratings are based on the information currently available in the USDA/NRCS soil survey database. Those numbers are subject to change on an annual basis.

For additional details, maps, photos & bidding call or visit us at →

MEYER & COMPANY AUCTIONS
 636.462.7777
www.meyerlistings.com/auctions