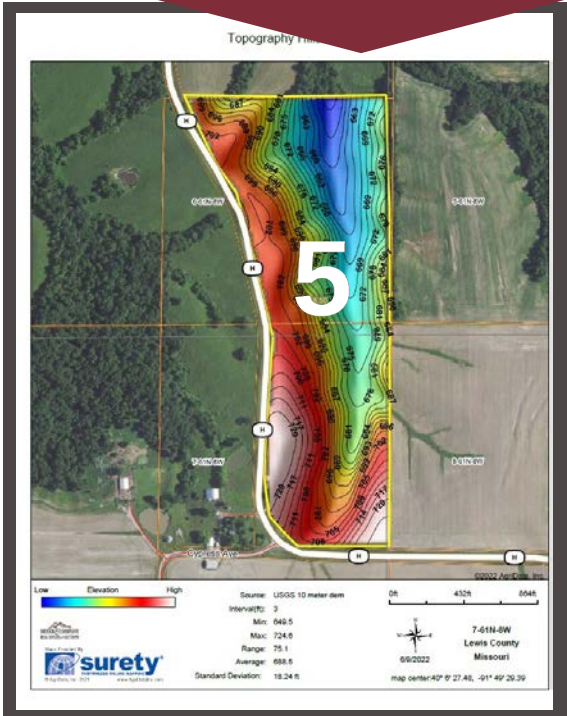


Lewis County, MO ~ Tract 5

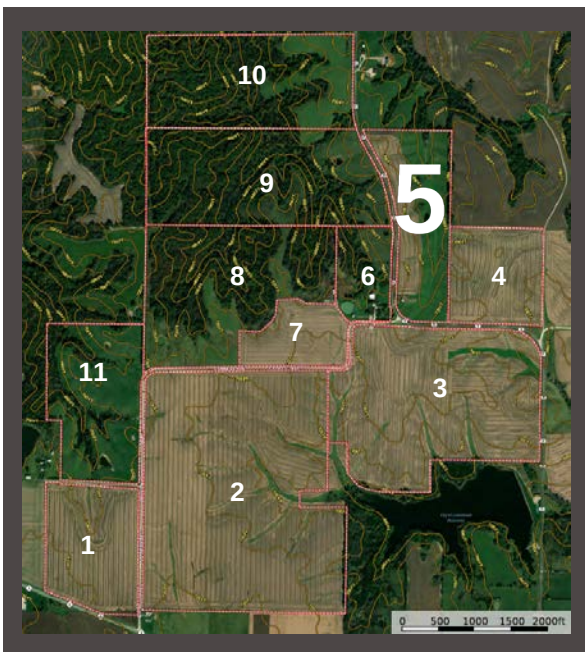
East of Hwy H
SEC 6&7, TWP 61N, RNG 8W
47.39 acres



www.meyerlistings.com/auctions

SOIL CODE	SOIL DESCRIPTION	ACRES	%	CPI	NCCPI	CAP
30095	Keosauqua clay loam, Audrain-Shelby plain, 9 to 14 percent slopes, eroded	31.96	65.57	0	57	4e
30068	Corin silt loam, 5 to 9 percent slopes, eroded	12.28	25.19	0	77	3e
50040	Lindley loam, 14 to 20 percent slopes, eroded	3.7	7.59	0	68	0c
30105	Kilwinning silt loam, 1 to 5 percent slopes	0.63	1.29	0	60	3e
50042	Lindley loam, 20 to 36 percent slopes, eroded	0.18	0.33	0	47	0e
TOTALS		837.38(*)	100%		62.87	3.80

(*) Total acres may differ in the second decimal compared to the sum of each acreage soil. This is due to a round error because we only show the acres of each soil with two decimal.



ONLINE BIDDING
POWERED BY:
BIDWRANGLER

- 47.39 gently rolling open acre tract
- 16+/- acres productive row crop land
- 30+/- acres of pasture land
- Blacktop road frontage on 2 sides
- Great site for home/cabin, farmstead, cattle & horses. Possible lake site
- Well maintained w/soil conservation practices

The information gathered for this brochure is from sources deemed reliable, but cannot be guaranteed by Meyer & Company Auctions or its staff. All acres are considered more or less, unless otherwise stated. All property boundaries are approximate. Soil productivity ratings are based on the information currently available in the USDA/NRCS soil survey database. Those numbers are subject to change on an annual basis.

For additional details, maps, photos & bidding call or visit us at →

MEYER & COMPANY
AUCTIONS

636.462.7777

www.meyerlistings.com/auctions