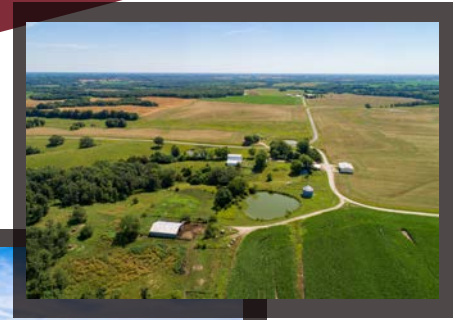
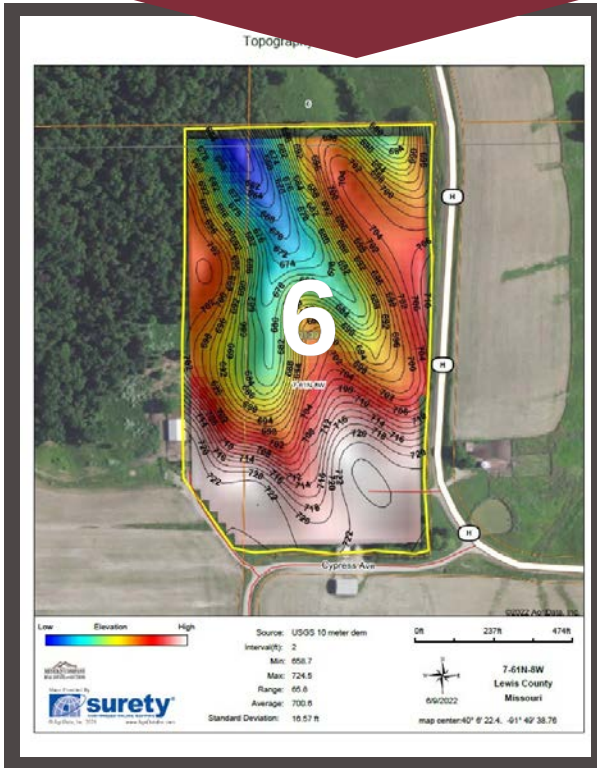


Lewis County, MO ~ Tract 6

Hwy H & Cypress Avenue
 SEC 7, TWP 61N, RNG 8W
 24.07 acres



www.meyerlistings.com/auctions



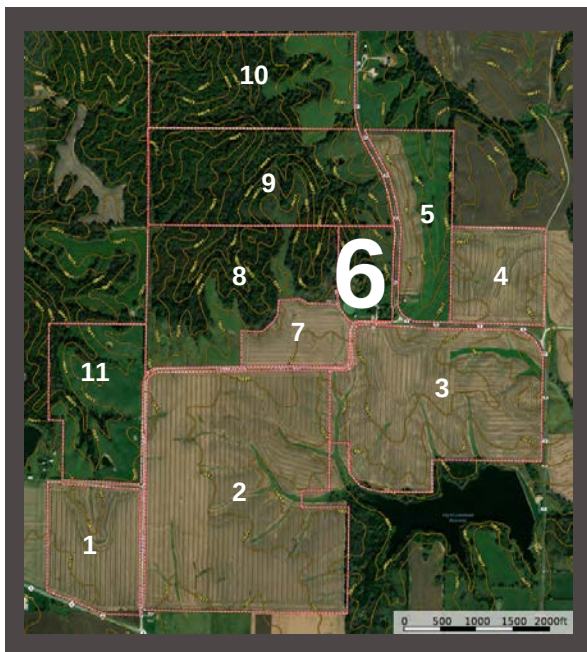
| SOIL CODE | SOIL DESCRIPTION | ACRES | % | CPI | NOCPH | CAP |
|-----------|--|-------|-------|-----|-------|------|
| 50042 | Lindley loam, 20 to 35 percent slopes, eroded | 12.87 | 58.12 | 0 | 47 | 6e |
| 30068 | Gorin silt loam, 5 to 9 percent slopes, eroded | 6.79 | 31.19 | 0 | 77 | 3c |
| 30106 | Kilwinning silt loam, 1 to 5 percent slopes | 2.11 | 9.69 | 0 | 60 | 3e |
| TOTALS | | 21.77 | 100% | | 57.02 | 4.77 |

(*) Total acres may differ in the second decimal compared to the sum of each acreage soil. This is due to a round error because we only show the acres of each soil with two decimal



ONLINE BIDDING
 POWERED BY:
BIDWRANGLER

- 24.07 acres with some fencing
- 2 story farmhouse (as-is)
- Multiple buildings
- A few ponds
- Blacktop & County road frontage
- Great site for home, mini-farm, livestock
- Public water & electric to site



The information gathered for this brochure is from sources deemed reliable, but cannot be guaranteed by Meyer & Company Auctions or its staff. All acres are considered more or less, unless otherwise stated. All property boundaries are approximate. Soil productivity ratings are based on the information currently available in the USDA/NRCS soil survey database. Those numbers are subject to change on an annual basis.

For additional details, maps, photos & bidding call or visit us at →

MEYER & COMPANY
 AUCTIONS

636.462.7777

www.meyerlistings.com/auctions