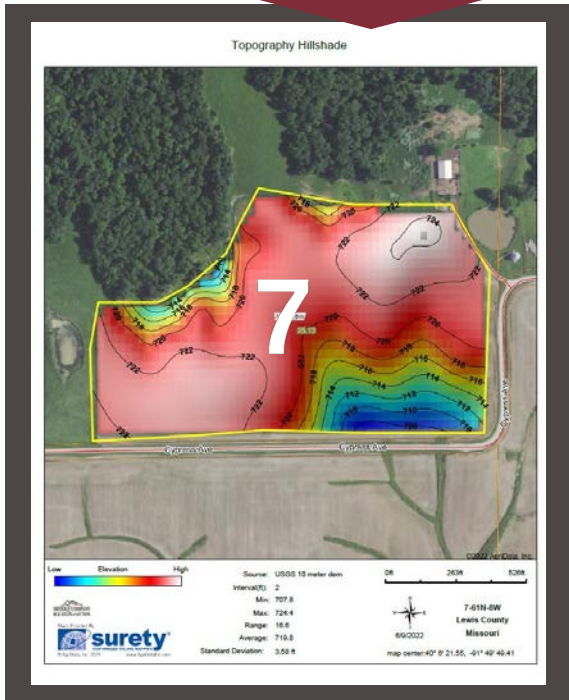


# Lewis County, MO ~ Tract 7

North of Cypress Avenue  
SEC 7, TWP 61N, RNG 8W  
26.67 acres

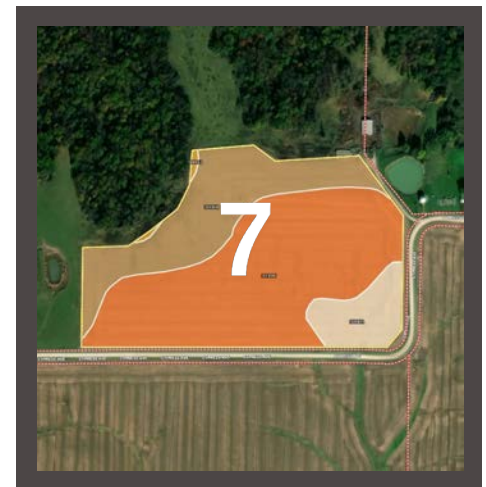


[www.meyerlistings.com/auctions](http://www.meyerlistings.com/auctions)



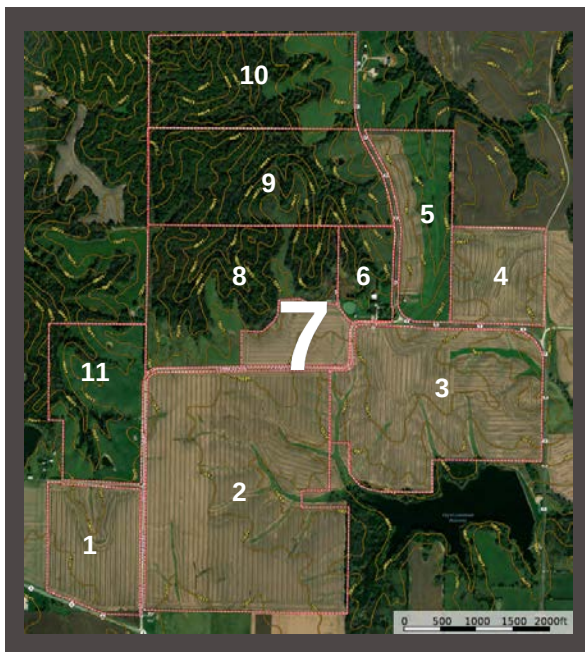
SOIL CODE	SOIL DESCRIPTION	ACRES	%	CPI	NCCPI	CAP
30100	Kilwinning silt loam, 1 to 5 percent slopes	14.9	60.08	0	60	3c
30066	Gorin silt loam, 5 to 9 percent slopes, eroded	7.29	29.4	0	77	3e
50001	Armstrong loam, 5 to 9 percent slopes, eroded	2.47	9.96	0	67	4c
50042	Lindley loam, 20 to 35 percent slopes, eroded	0.13	0.52	0	47	6e
TOTALS		24.79 8(*)	100%	-	65.6	3.12

(\*) Total acres may differ in the second decimal compared to the sum of each acreage soil. This is due to a round error because we only show the acres of each soil with two decimal



ONLINE BIDDING  
POWERED BY:  
**BIDWRANGLER**

- 26.67 acre tract nearly all tillable
- Highly tillable productive row crop land
- County road frontage
- Flat to gently rolling topography
- Kilwinning & Gorin soil types
- Terraced with drain tiles



The information gathered for this brochure is from sources deemed reliable, but cannot be guaranteed by Meyer & Company Auctions or its staff. All acres are considered more or less, unless otherwise stated. All property boundaries are approximate. Soil productivity ratings are based on the information currently available in the USDA/NRCS soil survey database. Those numbers are subject to change on an annual basis.

For additional details, maps, photos & bidding call or visit us at →

**MEYER & COMPANY**  
AUCTIONS

636.462.7777

[www.meyerlistings.com/auctions](http://www.meyerlistings.com/auctions)