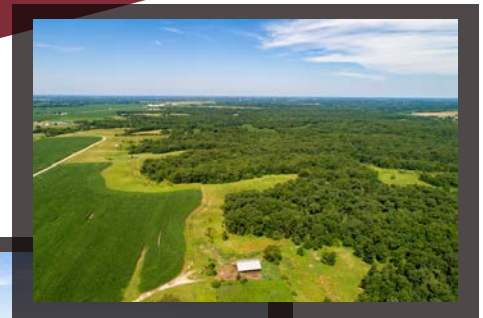
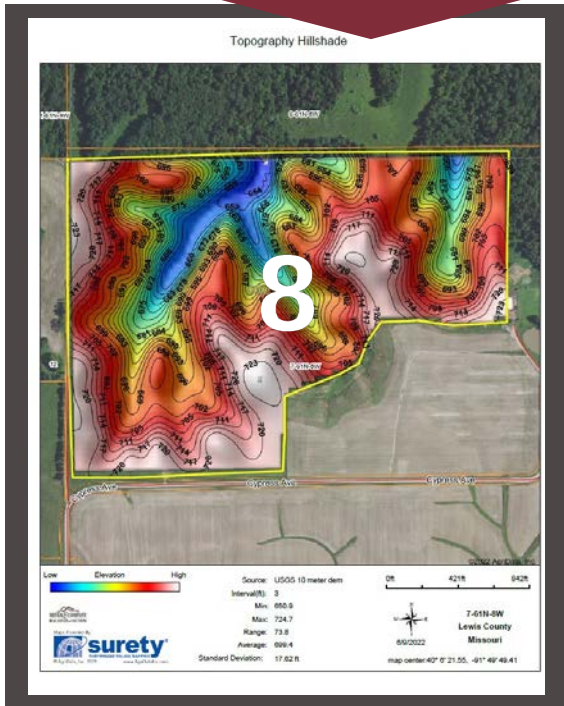


# Lewis County, MO ~ Tract 8

North of Cypress Avenue  
 SEC 7, TWP 61N, RNG 8W  
**93.47 acres**



[www.meyerlistings.com/auctions](http://www.meyerlistings.com/auctions)

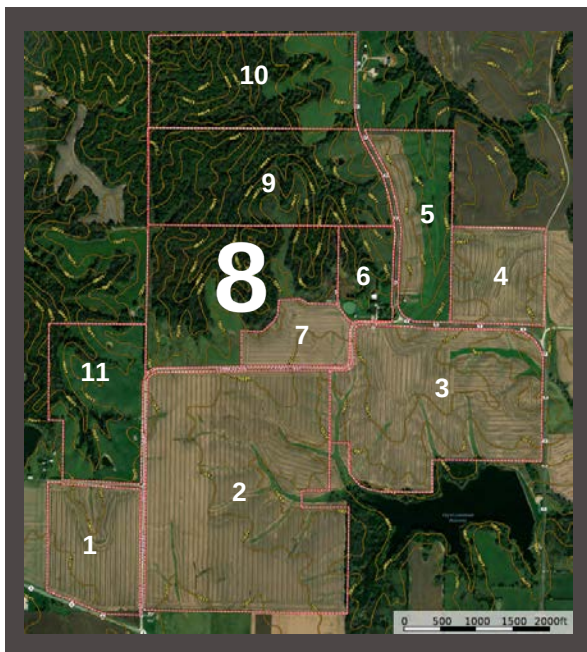


SOIL CODE	SOIL DESCRIPTION	ACRES	%	CPI	NCCPI	CAP
50042	Lindley loam, 20 to 35 percent slopes, eroded	67.49	74.86	0	47	6c
7006A	Gorin silt loam, 5 to 8 percent slopes, eroded	22.49	24.94	0	77	7A
3010C	Kilwanning silt loam, 1 to 5 percent slopes	0.18	0.2	0	80	3e
<b>TOTALS</b>		<b>837.3</b>	<b>100%</b>		<b>54.51</b>	<b>5.25</b>

(\*) Total acres may differ in the second decimal compared to the sum of each acreage soil. This is due to a round error because we only show the acres of each soil with two decimal.



- 93.47 acre tract
- Pasture & mature hardwood timber
- County road frontage
- Excellent hunting/recreational property
- Great site for home/cabin, cattle and horses
- Electric to site



The information gathered for this brochure is from sources deemed reliable, but cannot be guaranteed by Meyer & Company Auctions or its staff. All acres are considered more or less, unless otherwise stated. All property boundaries are approximate. Soil productivity ratings are based on the information currently available in the USDA/NRCS soil survey database. Those numbers are subject to change on an annual basis.

For additional details, maps, photos & bidding call or visit us at →



636.462.7777

[www.meyerlistings.com/auctions](http://www.meyerlistings.com/auctions)