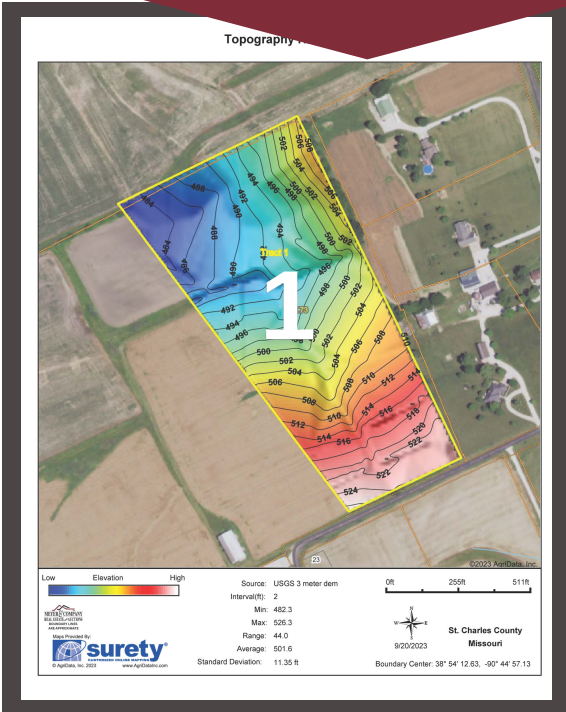
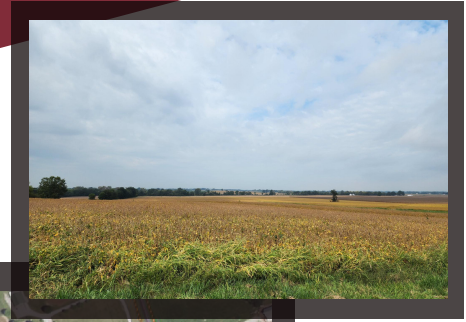


ABSOLUTE LAND AUCTION

3rd Generation Keeteman Family Farm St. Charles County, MO ~ Tract 1

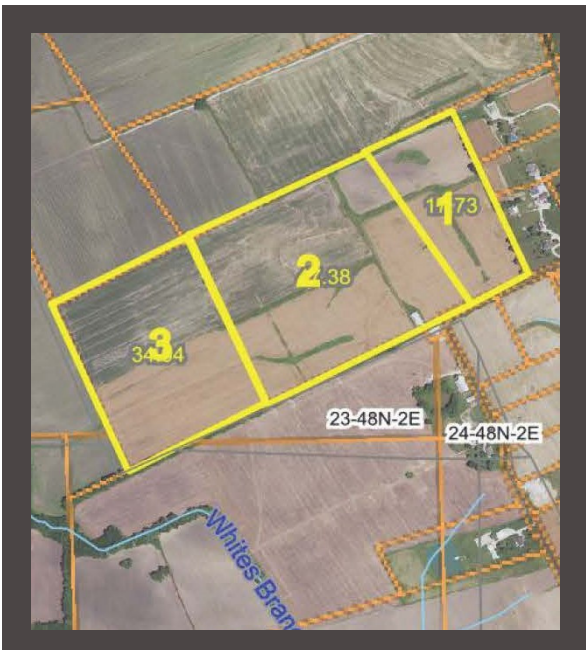
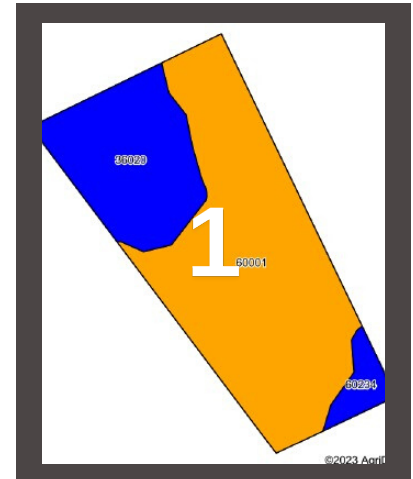
17+/- acres



www.meyerlistings.com/auctions

Area Symbol: MO183, Soil Area Version: 23

Code	Soil Description	Acres	Percent of field	Non-Irr Class Legend	Non-Irr Class °c	Alfalfa hay Tons	Caucasian bluestem Tons	Common bermudagrass Tons	Orchardgrass red clover Tons	Tall fescue Tons	Warm season grasses Tons	*n NCCPI Soybeans
60001	Menfro silt loam, 5 to 9 percent slopes, eroded	12.04	67.9%	Ille								64
36020	Kennebec silt loam, 0 to 2 percent slopes, occasionally flooded	4.91	27.7%	Ilw	5	8		7	7	7	9	72
60234	Weller silt loam, 2 to 5 percent slopes	0.78	4.4%	Ille								61
Weighted Average						2.68	1.4	2.2	1.9	1.9	1.9	*n 66.1



ONLINE BIDDING
POWERED BY:
BIDWRANGLER

- 17+/- acre tract
- Highly tillable, productive cropland
- Flat to gently rolling topography
- Soil Profile of Menfro, Kennebec, and Weller
- Close proximity to Highway 79
- Ideal for farming, a single family residence, or development

The information gathered for this brochure is from sources deemed reliable, but cannot be guaranteed by Meyer & Company Auctions or its staff. All acres are considered more or less, unless otherwise stated. All property boundaries are approximate. Soil productivity ratings are based on the information currently available in the USDA/NRCS soil survey database. Those numbers are subject to change on an annual basis.

For additional details, maps, photos & bidding call or visit us at →

MEYER & COMPANY
AUCTIONS

636.462.7777

www.meyerlistings.com/auctions