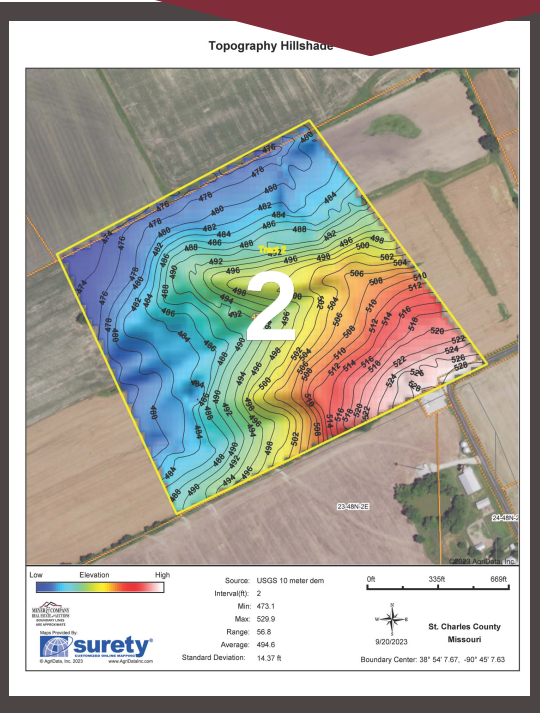
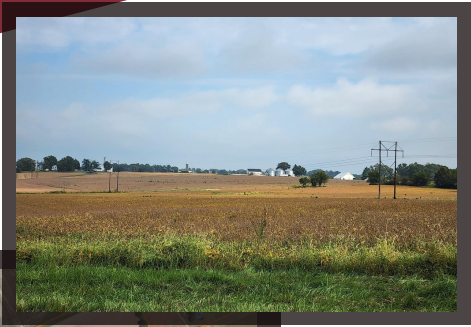


ABSOLUTE LAND AUCTION

3rd Generation Keeteman Family Farm

St. Charles County, MO ~ Tract 2

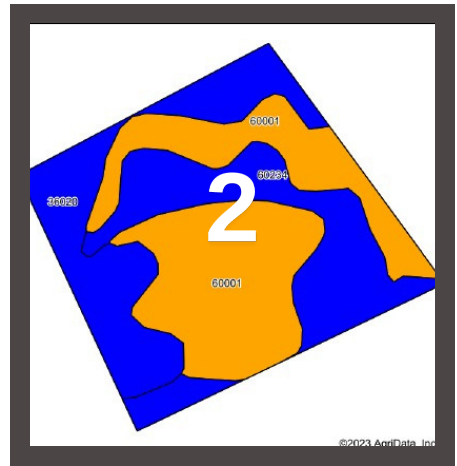
47+/- acres



www.meyerlistings.com/auctions

Symbol: MO183, Soil Area Version: 23

Soil Description	Acres	Percent of field	Non-Irr Class Legend	Non-Irr Class %	Alfalfa hay Tons	Caucasian bluestem Tons	Common bermudagrass Tons	Orchardgrass red clover Tons	Tall fescue Tons	Warm season grasses Tons	'n NCC Soybean
Menfro silt loam, 5 to 9 percent slopes, eroded	21.88	46.2%	Orange	IIIe							
Weller silt loam, 2 to 5 percent slopes	12.89	27.2%	Blue	IIe							
Kennebec silt loam, 0 to 2 percent slopes, occasionally flooded	12.61	26.6%	Blue	IIw	5	8	7	7	7	9	
Weighted Average					2.46	1.3	2.1	1.9	1.9	1.9	2.4



ONLINE BIDDING
POWERED BY:
BIDWRANGLER

- 47+/- acre tract- all tillable
- Highly tillable productive farmland
- 50x100' pole barn for storage
- Soils made up of Kennebec and Menfro Silt Loams
- Dyer Road frontage
- Flat to gently rolling topography
- Great for farming, investment, or development

The information gathered for this brochure is from sources deemed reliable, but cannot be guaranteed by Meyer & Company Auctions or its staff. All acres are considered more or less, unless otherwise stated. All property boundaries are approximate. Soil productivity ratings are based on the information currently available in the USDA/NRCS soil survey database. Those numbers are subject to change on an annual basis.

For additional details, maps, photos & bidding call or visit us at →

MEYER & COMPANY
AUCTIONS

636.462.7777

www.meyerlistings.com/auctions