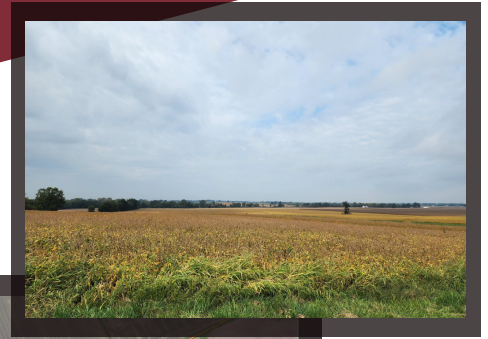


ABSOLUTE LAND AUCTION

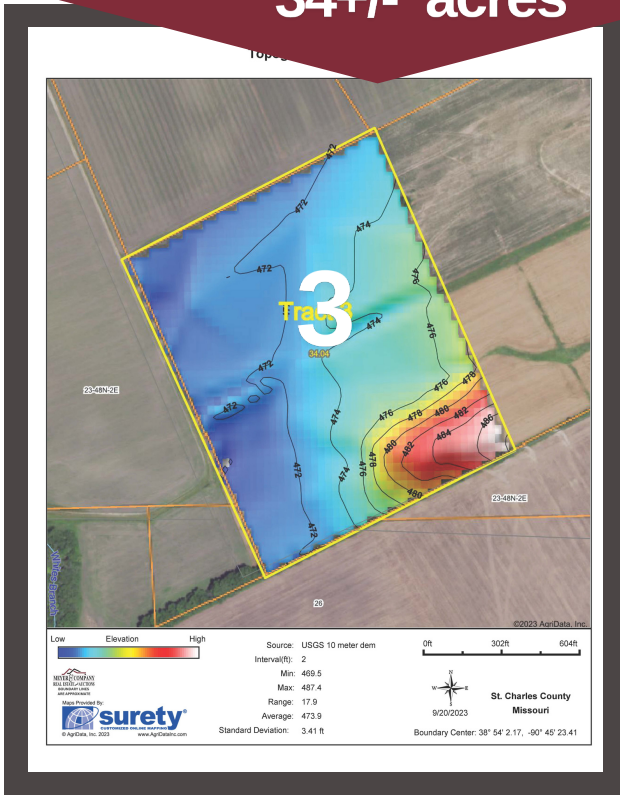
3rd Generation Keeteman Family Farm

St. Charles County, MO ~ Tract 3

34+/- acres

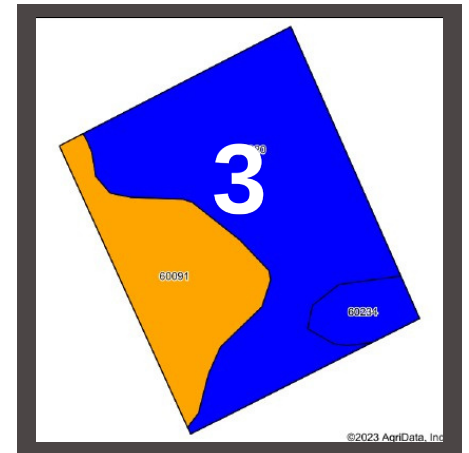


www.meyerlistings.com/auctions



47+/- acres

Code	Soil Description	Acres	Percent of field	Non-irr Class	Non-irr Class °C	Alfalfa hay Tons	Caucasian bluestern Tons	Common bermudagrass Tons	Orchardgrass red clover Tons	Tall fescue Tons	Warm season grasses Tons	% NCCPI Soybeans
36020	Kennebec silt loam, 0 to 2 percent slopes, occasionally flooded	22.17	65.1%	Blue	Illw	5	8	7	7	7	9	72
60091	Edinburg silty clay loam, 0 to 1 percent slopes, frequently ponded	9.82	28.3%	Orange	Illw		2	8	7	8	10	44
60234	Weller silt loam, 2 to 5 percent slopes	2.25	6.6%	Blue	Ile							61



ONLINE BIDDING
POWERED BY:
BIDWRANGLER

- 34+/- acre tract
- Highly tillable, productive farmland
- Nearly Flat
- Soil made up of mostly Kennebec Silt Loam with some Edinburg Silty Clay Loam.
- Ideal for farming, investment, or development



The information gathered for this brochure is from sources deemed reliable, but cannot be guaranteed by Meyer & Company Auctions or its staff. All acres are considered more or less, unless otherwise stated. All property boundaries are approximate. Soil productivity ratings are based on the information currently available in the USDA/NRCS soil survey database. Those numbers are subject to change on an annual basis.

For additional details, maps, photos & bidding call or visit us at →

MEYER & COMPANY
AUCTIONS
636.462.7777
www.meyerlistings.com/auctions